

Coastal Enterprise

DP shallow draft Multi Cat 3912

CLASSIFICATION / FLAG

Flag	Dutch
Trading area	Unrestricted
Call sign	PHCG
IMO	8987424
Classification society	Bureau Veritas
Class ship type	Special Service / Workboat
Class notation	1✠ Hull ● Mach ✠ AUT-UMS
Safety equipment	Max. 12 persons
Dynamic Position Installation	DP-0 (Not Class certified-5 Thrusters)

PRINCIPAL DIMENSIONS

Length o.a.	39,00 m
Breadth o.a.	11,50 m
Draft	Min. 1,12 mtr. Max. 1,40 mtr.
Max. Deadweight	175 ton
GRT	356
NRT	106
Max. deck load	7 ton/m ²
Free deck space	300 m ²

ACCOMMODATION

Accommodation	Fully airconditioned 6 Persons 2x single berth cabins 2x double berth cabins
---------------	---

NAVIGATION AND COMMUNICATION SYSTEMS

GMDSS	A1, A2, A3
VHF	Available

MACHINERY / PROPULSION

Maximum speed	9 knots
Bollard pull	16 ton
Power output	1588 kW
Propulsion	Twin fixed pitch propellers in nozzles
Main engines	3x Caterpillar 3406C DI-TA 298 kW 2x Cummings N14G1 347kW
Auxiliary engines	2x Caterpillar C6.6 DITA 125 kVA - 400V/50Hz
Bow thruster	2x 360° azimuth thruster 347 kW
Stern thruster	360° azimuth thruster 298 kW
Hydraulic powerpack	John Deere 6068 TFM75 115kW

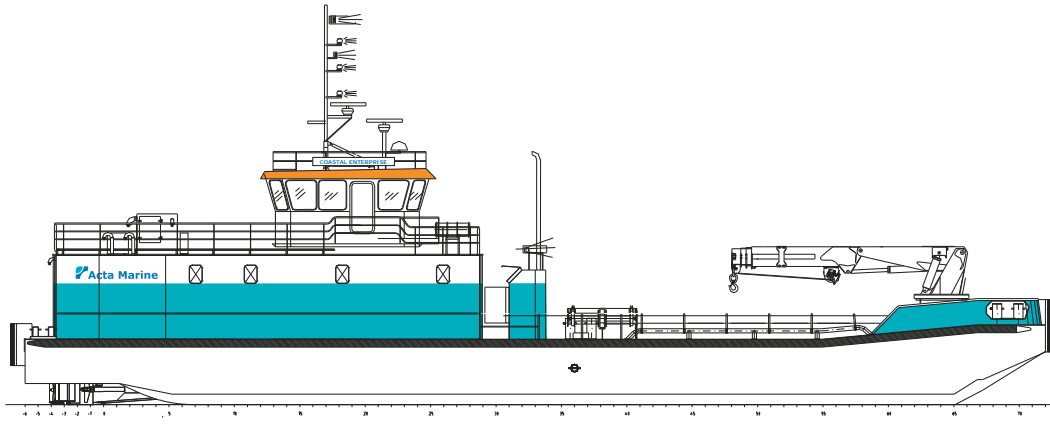
DECK EQUIPMENT

AHT winch	30 ton
Tugger winch	1x 7 ton 2x 8 ton
Hydraulic deck crane	Heila HLRM 240-2S 240tm Fixed hook SWL 16 ton at 11,80 mtr. Wire winch SWL 15 ton
Spud pole	sb foreship - diam. 600 mm

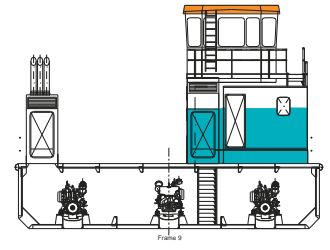
TANK CAPACITIES

Fresh water	74 m ³
Fuel	55 m ³
Sewage	21.5 m ³
Black/grey water	1,3 m ³
Ballast water	346 m ³

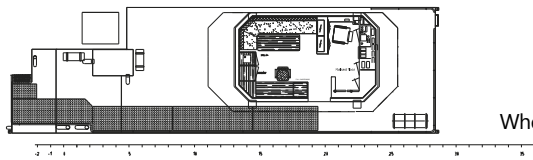
General Arrangement - Coastal Enterprise



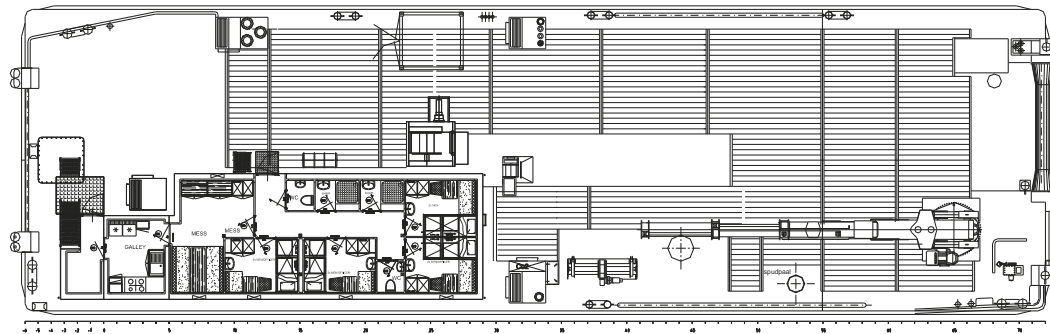
Profile



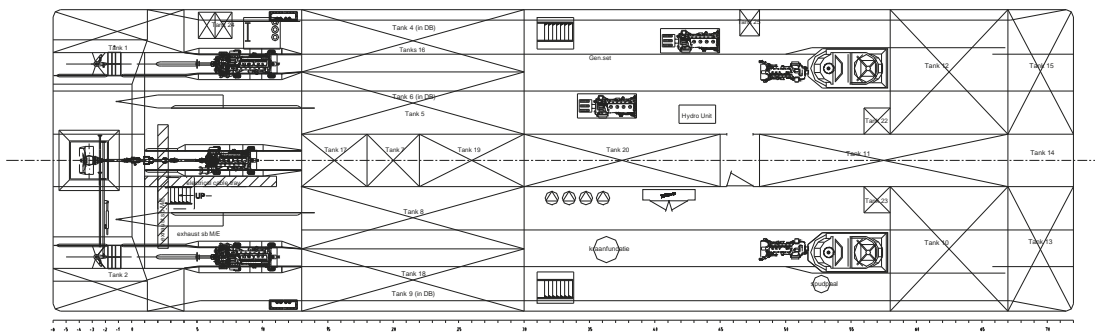
Front view



Wheelhouse deck



Main deck



Below main deck