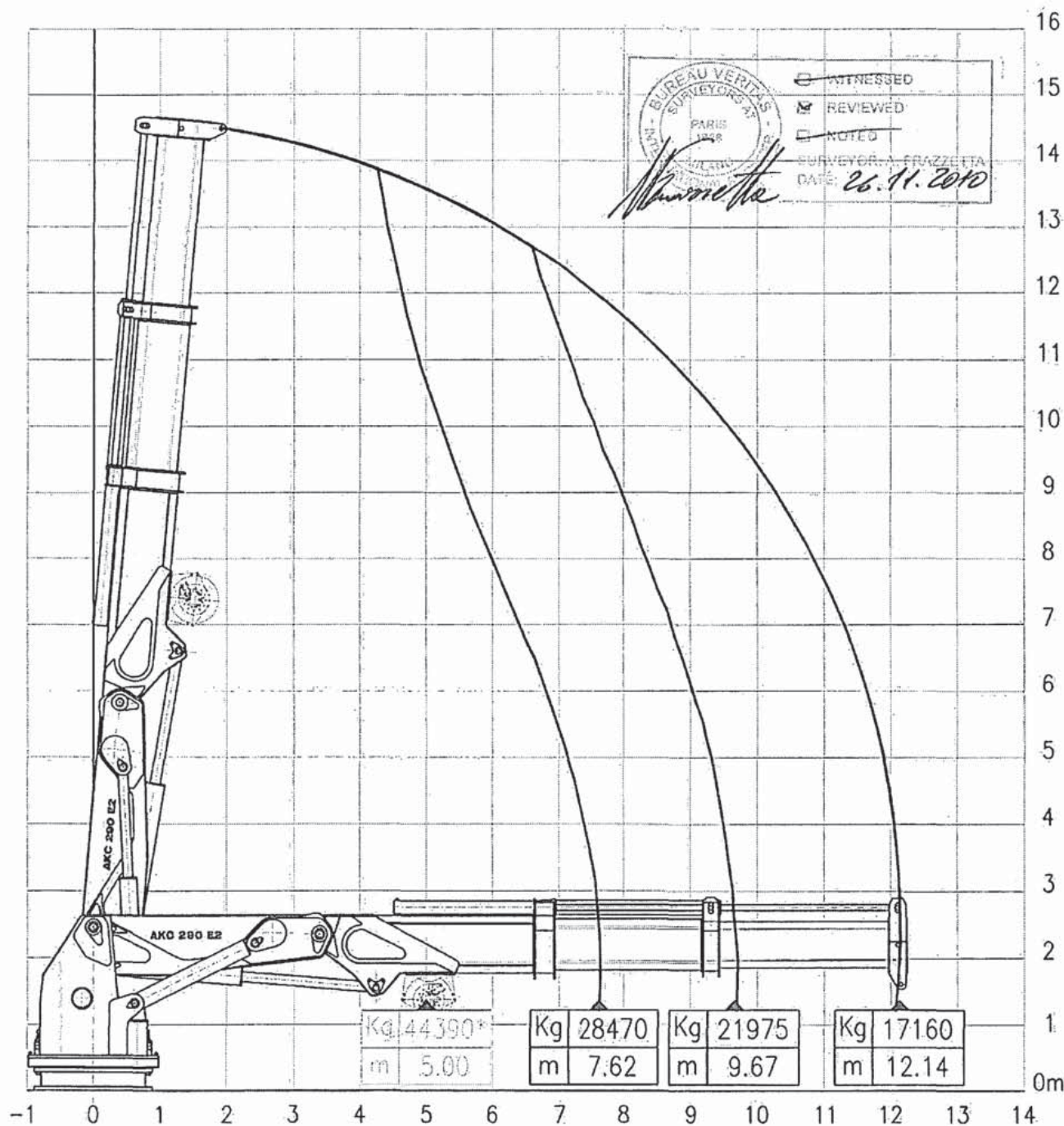


# Coastal Atlas - Crane - Fore

WORKING DIAGRAM with HOOK  
 ( Max.permitted heel/trim 6°/2°)



BUREAU VERITAS  
 SURVEYORS  
 PARIS  
 WITNESSED  
 REVIEWED  
 NOTED  
 SURVEYOR: A. FRAZZETTA  
 DATE: 26.11.2010

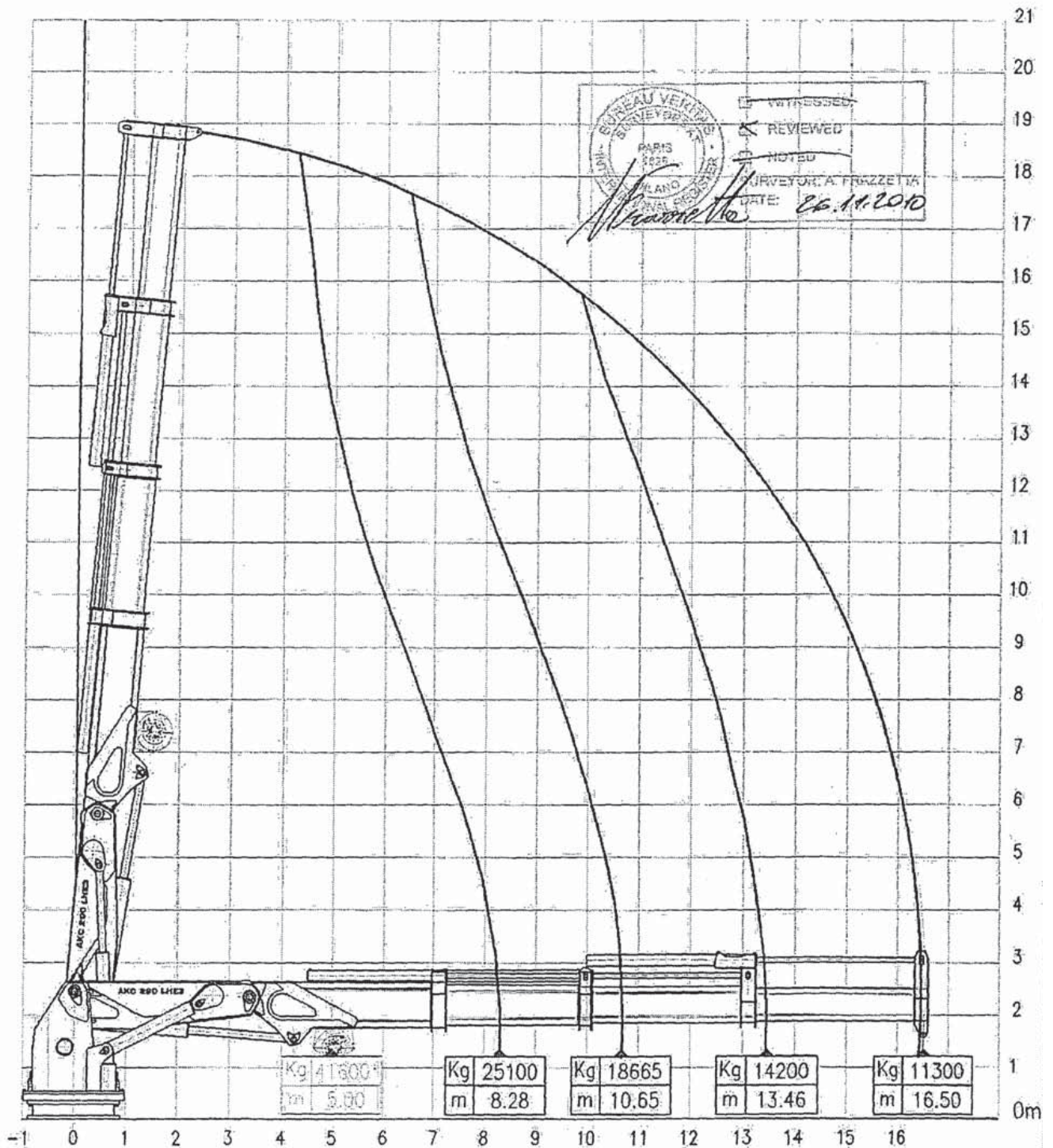
## Marine Crane Model AKC 290 E2

Crane built and designed in according to DIN 15018 Class H1-B3

# Coastal Atlas - Crane - Aft

WORKING DIAGRAM with HOOK

HS MARINE



WITNESSED  
 REVIEWED  
 NOTED  
 SURVEYOR: A. FRAZZETTA  
 DATE: 26.11.2010

Marine Crane model AKC 290 LHE3

Crane built and designed in according to DIN 15018 Class H1-B3