

# *Hydraulic Marine Crane*

*type HLRM 230-4SL*

*Customer : 5WUAUfjby*

*Customer Ref. : 7cUgU5W*

*Crane serial No. : HC-16030*

*Our order No. : 1499*

*DOUBLE D marine equipment B.V.  
PO Box 480 - 5140 AL - Waalwijk - The Netherlands*

*e-mail : [info@double-d-marine.com](mailto:info@double-d-marine.com)  
internet : [www.double-d-marine.com](http://www.double-d-marine.com)*

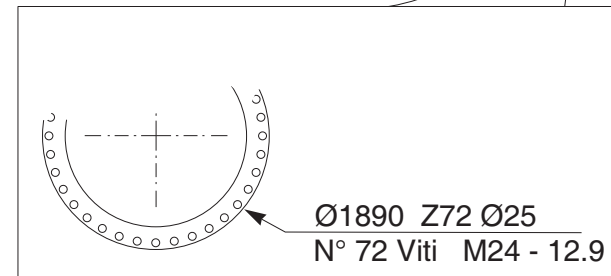
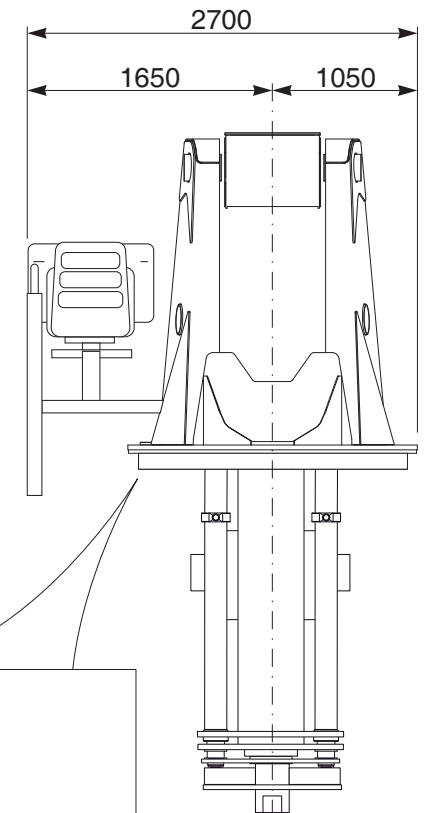
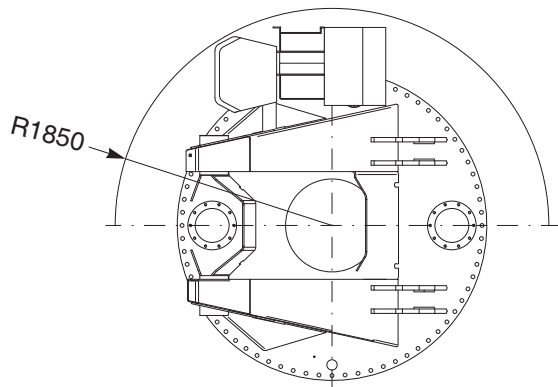
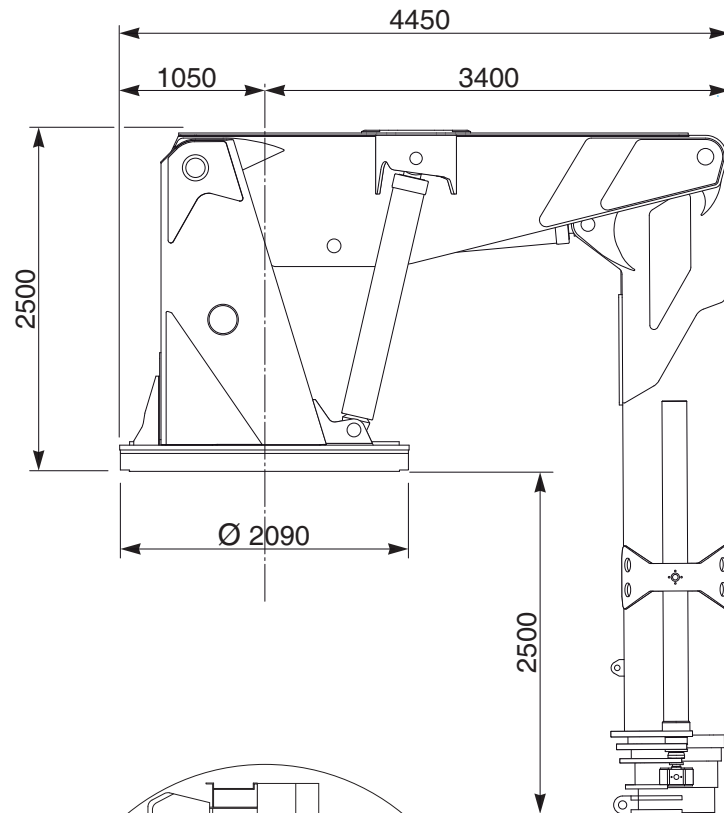
*tel. +31 416 651 012  
fax. +31 416 650 757*



**Dimensioni d'ingombro**

**Overall dimensions**

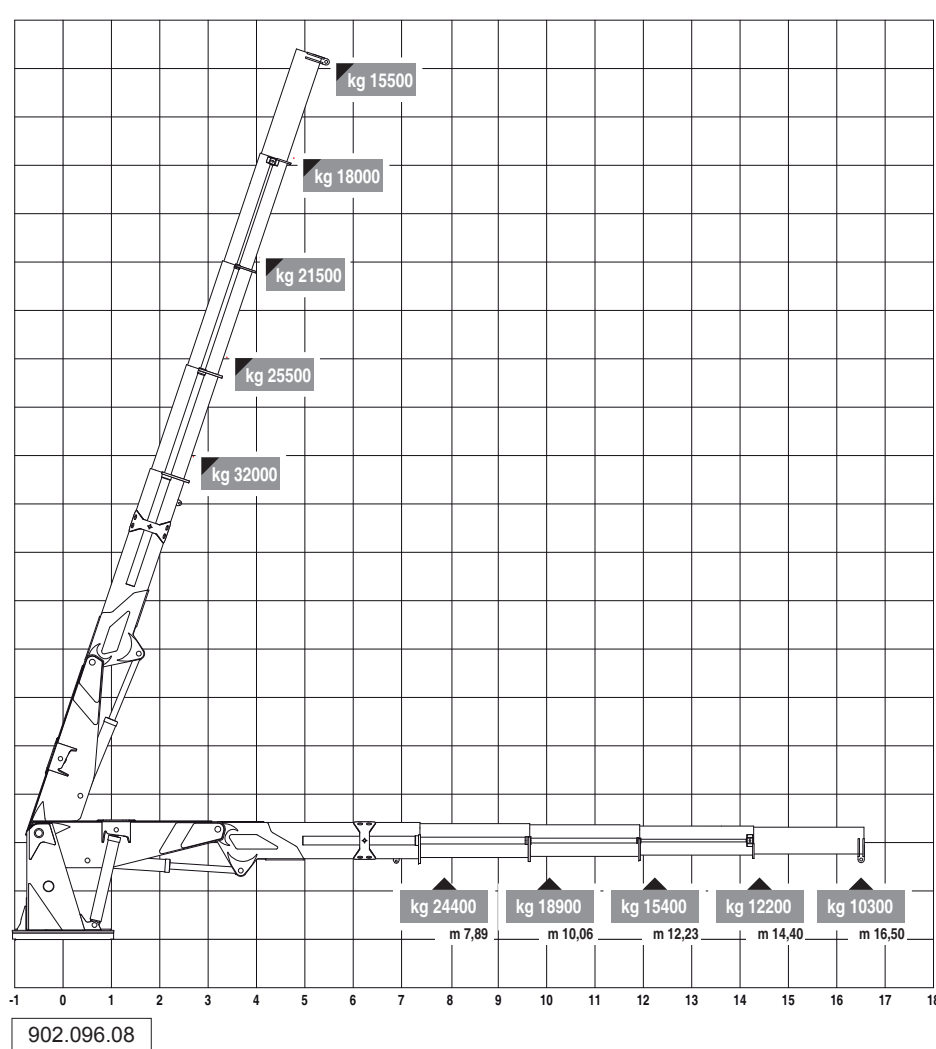
113



902.096.07-1

HLRM 230-4SL

Il diagramma si riferisce all'utilizzo della gru in uso portuale o stato di mare "0" (inclinazione massima imbarcazione  $5^{\circ}/2^{\circ}$ ). Qualora la gru venga utilizzata off-shore con condizioni di mare più gravose, occorre consultare il Costruttore per la definizione delle nuove portate di carico o dei parametri di riduzione.



The diagram refers to the use of the crane in the port or with sea roughness "0" (heel trim max.  $5^{\circ}/2^{\circ}$ ).

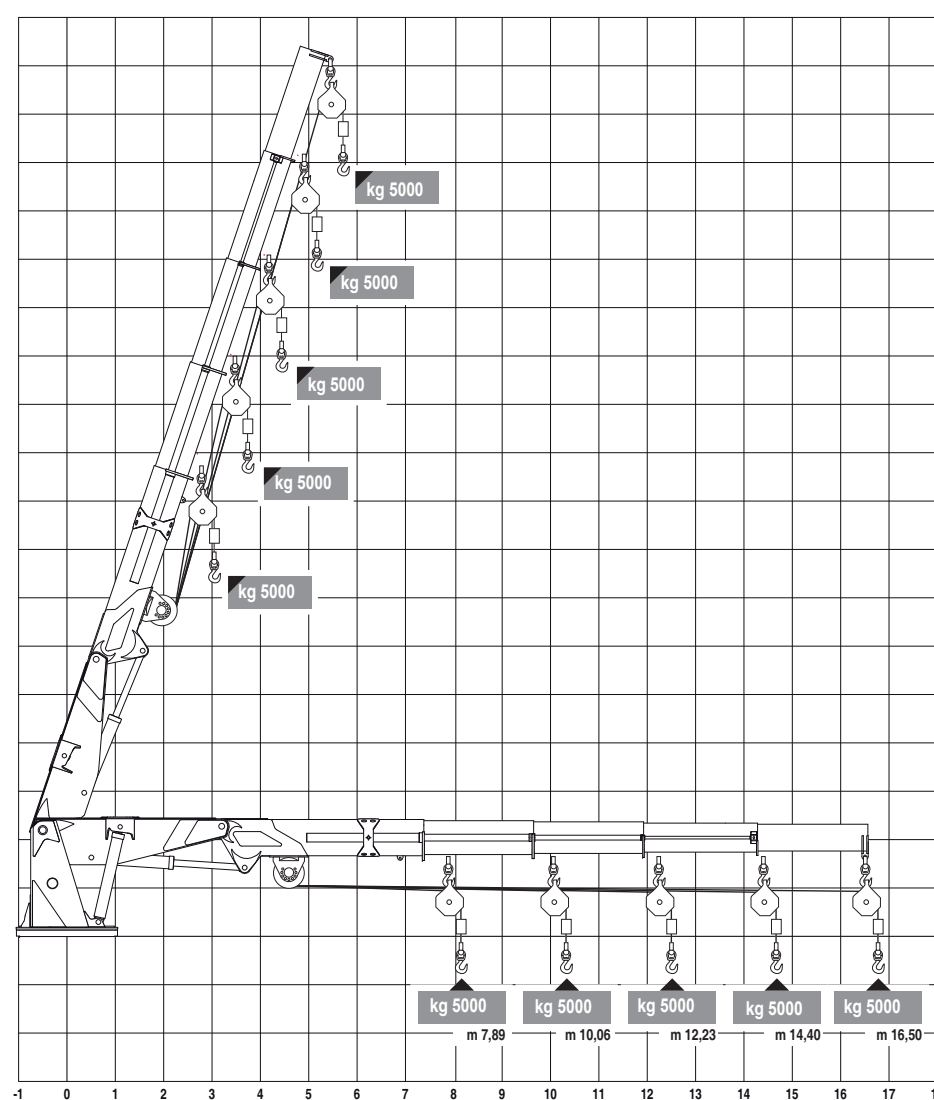
If the crane is used in Off-shore state with more heavy sea state conditions, it is necessary to consult the manufacturer in order to establish the new capacities or the reduction parameters.

Il diagramma si riferisce all'utilizzo della gru in uso portuale o stato di mare "0" (inclinazione massima imbarcazione 5°/2°).



**ATTENZIONE**

Nell'uso ad argano sono vietati tutti i sollevamenti eseguiti tramite i cilindri della gru che possono provocare un sovraccarico all'argano stesso.



902.096.09



**ATTENTION**

The diagram refers to the use of the crane in the port or with sea roughness "0" (heel trim max. 5°/2°).

During winch operation, never winch loads by means of the crane cylinders since they may overload the winch.

# *Hydraulic Marine Crane*

*type HLRM 140-3S*

*Customer : 5VUAUFbY*

*Customer Ref. : 7cUgU5W*

*Crane serial No. : HC-16028*

*Our order No. : 1500*

*DOUBLE D marine equipment B.V.  
PO Box 480 - 5140 AL - Waalwijk - The Netherlands*

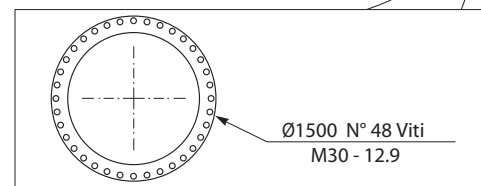
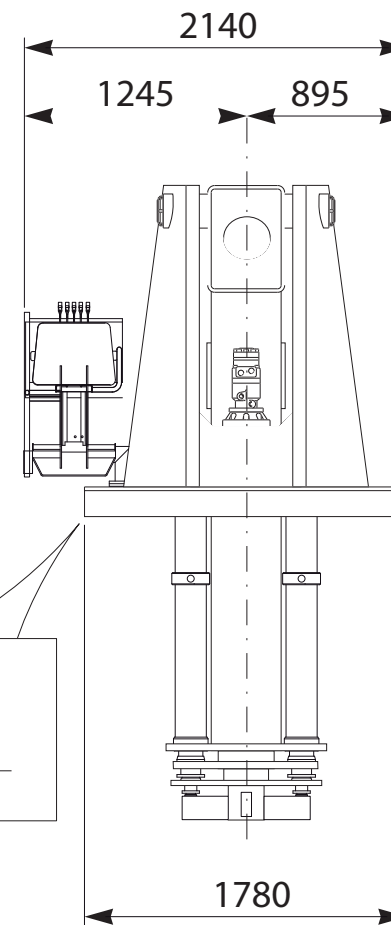
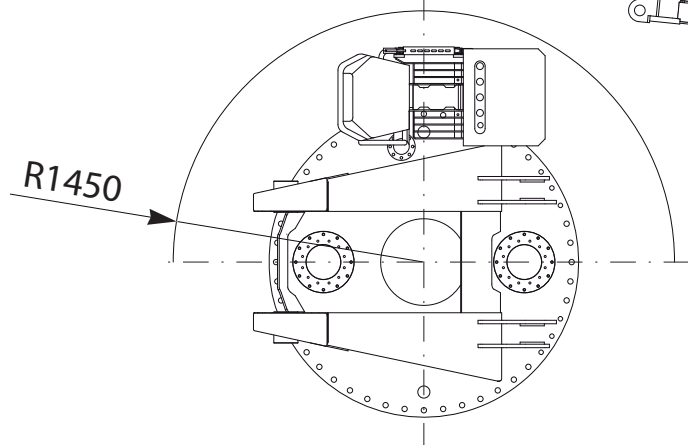
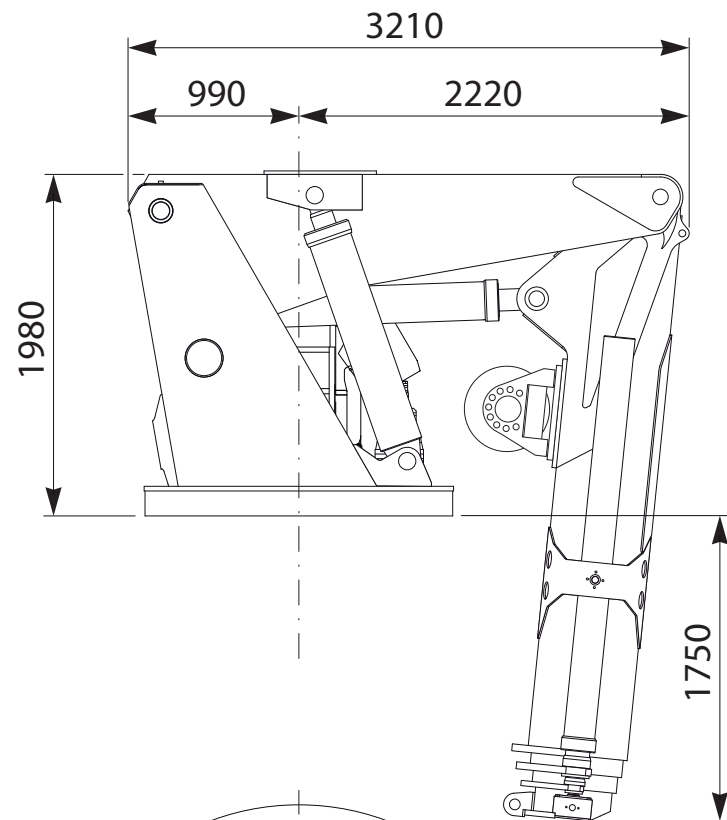
*e-mail : [info@double-d-marine.com](mailto:info@double-d-marine.com)  
internet : [www.double-d-marine.com](http://www.double-d-marine.com)*

*tel. +31 416 651 012  
fax. +31 416 650 757*

110

**Dimensioni d'ingombro**

**Overall dimensions**



902.111.04

HLRM 140-3S

Il diagramma si riferisce all'utilizzo della gru in stato di mare "0, o in uso portuale. Qualora la gru venga utilizzata off-shore con condizioni di mare più gravose, occorre consultare il Costruttore per la definizione delle nuove portate di carico o dei parametri di riduzione.

*The diagram refers to the using of the crane in sea state "0, or in a harbour condition. If the crane is used in Off-shore state with more heavy sea state conditions, it is necessary to consult the manufacturer in order to establish the new capacities or the reduction parameters.*

