



## Coastal Aurora

## Multi Cat 2712

### CLASSIFICATION / FLAG

Flag	Dutch
Trading area	Unrestricted
Call sign	PGDD
IMO	9698082
Classification society	Bureau Veritas
Class ship type	Special Service / Multi-purpose ship
Class notation	1✠ Hull ● Mach ● AUT-UMS Unrestricted navigation
Safety equipment	Max. 7 persons

### PRINCIPAL DIMENSIONS

Length o.a.	27,27
Breadth mld	11,50
Draft	Min. 2,85 m - Max. 3,06 m
GRT	296
NRT	88
Max. deck load	10 ton/m <sup>2</sup>
Free deck space	150 m <sup>2</sup>

### ACCOMMODATION

Accommodation	Fully heated and airconditioned
	7 persons
	5 cabins

### NAVIGATION AND COMMUNICATION SYSTEMS

GMDSS	A1,A2,A3
-------	----------

### MACHINERY / PROPULSION

Maximum speed	10 knots
Bollard pull	34 ton
Power output	1790 kW
Propulsion	Fixed pitch
Main engines	2x Caterpillar C32 ACERT 895 kW
Auxiliary engines	2x Caterpillar C4,4 107 kVA
Bow thruster	Tunnel type 184 kW Hydraulic driven
Hydraulic powerpack	Caterpillar C12 TA, 339 kW

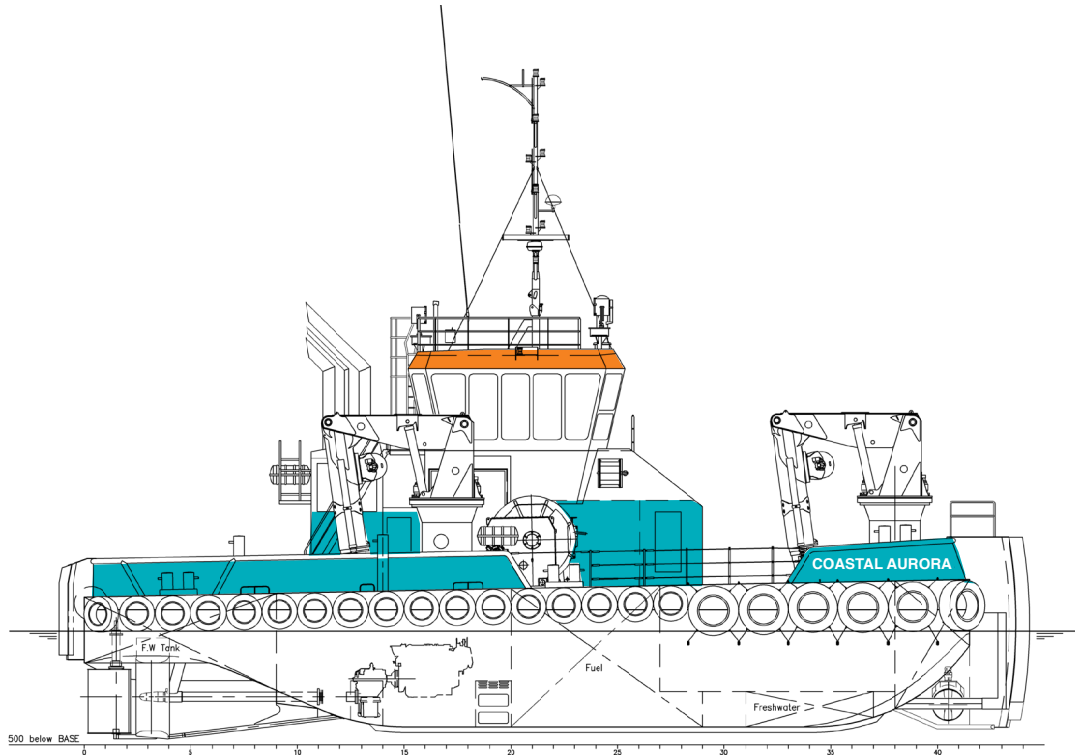
### DECK EQUIPMENT

AHT winch	Max. hold force 150 ton 115 ton - 3,0 m/min. 63 ton - 5,4 m/min wire cap. 1000 m/65 mm
Tugger winch	12 ton 20 m/min
Capstan	5 ton - 30 m/min.
Towing hook	Mampaey aft 33 ton
Hydr. deck crane	2 x Heila HLRM 230-4SLK 9,8t@16,5m
Towing Pins foredeck	WK double pin type with chainstopper

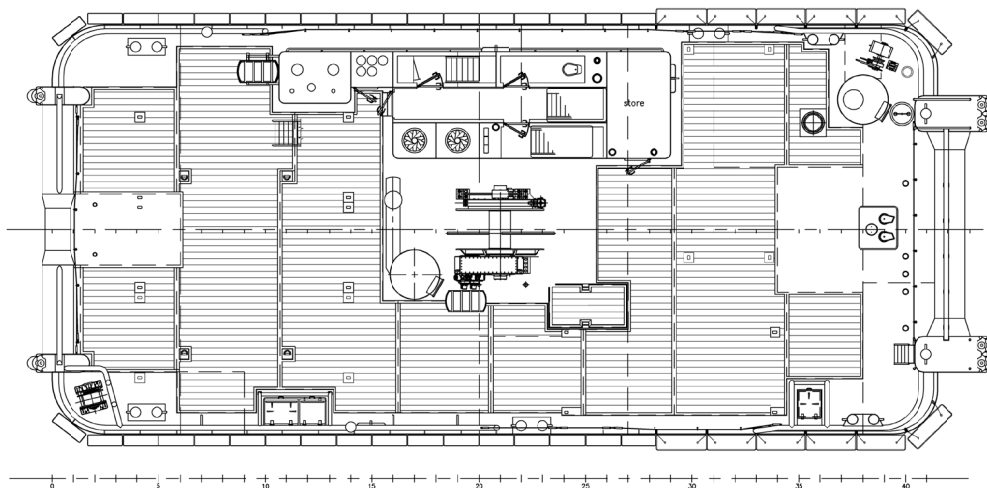
### TANK CAPACITIES

Fuel	109,5 m <sup>3</sup>
Fresh water	31,4 m <sup>3</sup>
Bilge water	4,0 m <sup>3</sup>
Technical water	51,8 m <sup>3</sup>
Sewage	10,5 m <sup>3</sup>

# General Arrangement - Coastal Aurora



Main deck



Below main deck

