



Coastal Bruiser

Multicat 2409

CLASSIFICATION / FLAG

Flag	NL
Trading area	Unrestricted
Call sign	2AOA9
IMO	9479723
Classification society	Bureau Veritas
Class ship type	Damen Multicat 2409
Class notation	I 3/3 Hull Unrestricted

PRINCIPAL DIMENSIONS

Length o.a.	23.33 mtr.
Breadth o.a.	9.00 mtr.
Draft	approx. 2,40 mtr
GRT	154
NRT	
Max. deck load	6 ton/m ²
Free deck space	approx. 120 m ²

ACCOMMODATION

Accommodation	Fully air-conditioned living space 6 persons 2x single berth cabins 2x double berth cabins
---------------	---

NAVIGATION AND COMMUNICATION SYSTEMS

GMDSS	A1, A2, A3
-------	------------

MACHINERY / PROPULSION

Maximum speed	10 knots
Bollard pull	23.5 ton
Power output	1264 kW
Propulsion	2x fixed pitch propellers in nozzles
Main engines	2x Caterpillar 3412 D TTA/B
Auxiliary engines	1x Caterpillar C-09 and C-04.4T 63.8 kVA, 50 Hz, 230/400V

DECK EQUIPMENT

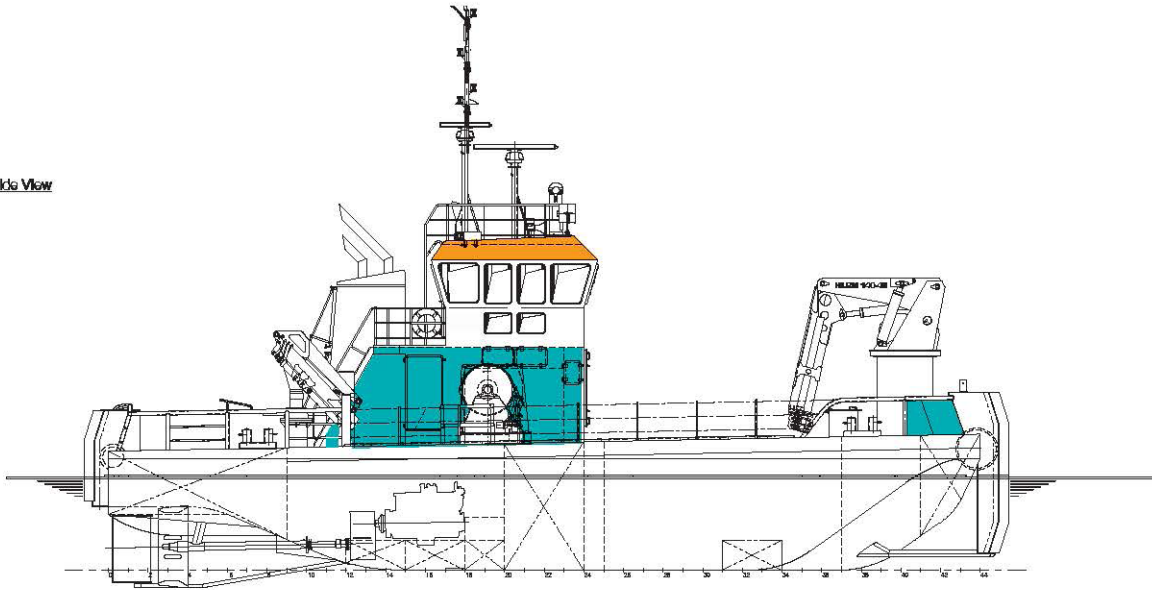
AH/towing winch	Max. hold force 40 ton 34 ton - 6 m/min 6 ton - 24 m/min Towing wire capacity 600 m/28 mm Winch wire capacity 300 m/32mm
Tugger winch	8 ton - 4.5 m/min
Hydraulic Deck Crane Forward	Heila HLRM 140-4S
Hydraulic Deck Crane Aft	Heila HLM 25-3 S
Towing hook	Mampaey 45 ton

TANK CAPACITIES

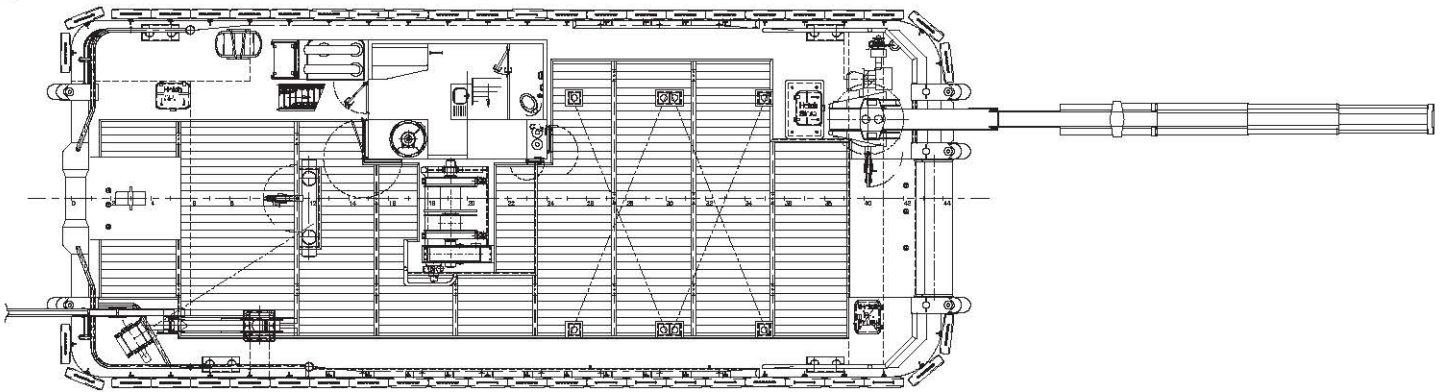
Fresh water	35.1 m ³
Fuel	44.1 m ³
Sewage	4.4 m ³
Bilge water	1.8 m ³
Dirty oil	2.2 m ³
Ballast water	20.2 m ³
Lubrication oil	1.5 m ³

General Arrangement - Coastal Bruiser

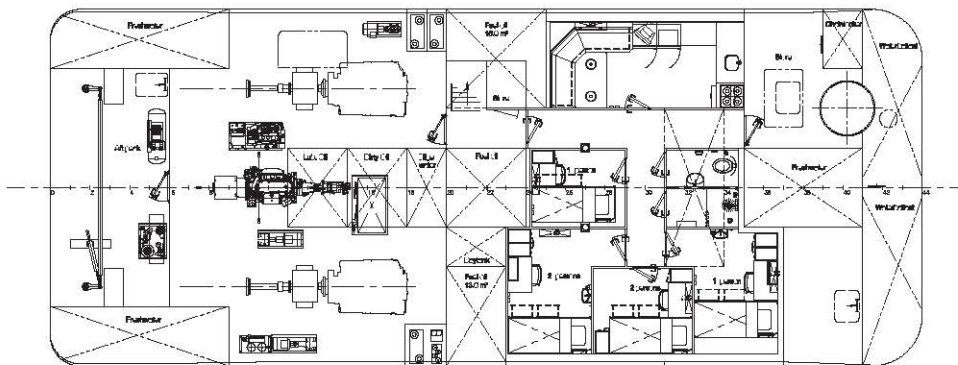
Side View



Maindeck



Below Maindeck



Front view

