



Coastal Saga

CLASSIFICATION / FLAG

Flag	Curacao
Trading area	Coastal waters (30 nm)
Call sign	PJEF
IMO	8607476
Classification society	Germanischer Lloyd
Class ship type	Supply Vessel / Tug
Class notation	100A5 K (Coastal Service) MC

PRINCIPAL DIMENSIONS

Length o.a.	32,80 m
Breadth o.a.	10,00 m
Draft	1,25 - 1,39 m
GRT	196
NRT	58
Max. deck load	3
Free deck space	122

ACCOMMODATION

Accommodation	Fully airconditioned, spacious surveyroom, galley, mess/dayroom & 6 x double berth cabins.
---------------	--

NAVIGATION AND COMMUNICATION SYSTEMS

GMDSS	A3
-------	----

MACHINERY / PROPULSION

Maximum speed	9,5 knots
Bollard pull	10 ton
Power output	696 kW / 947 hp
Propulsion	Triple screw fixed pitch propellers, one in nozzle & bow thruster
Main engines	Mitsubishi S6B3-MPTA
Auxiliary engines	380V/220V - 60 kVA/48 kW 380V/220V - 65 kVA 380V/220V - 230 kVA 63,4 kVA / 51,4 kW

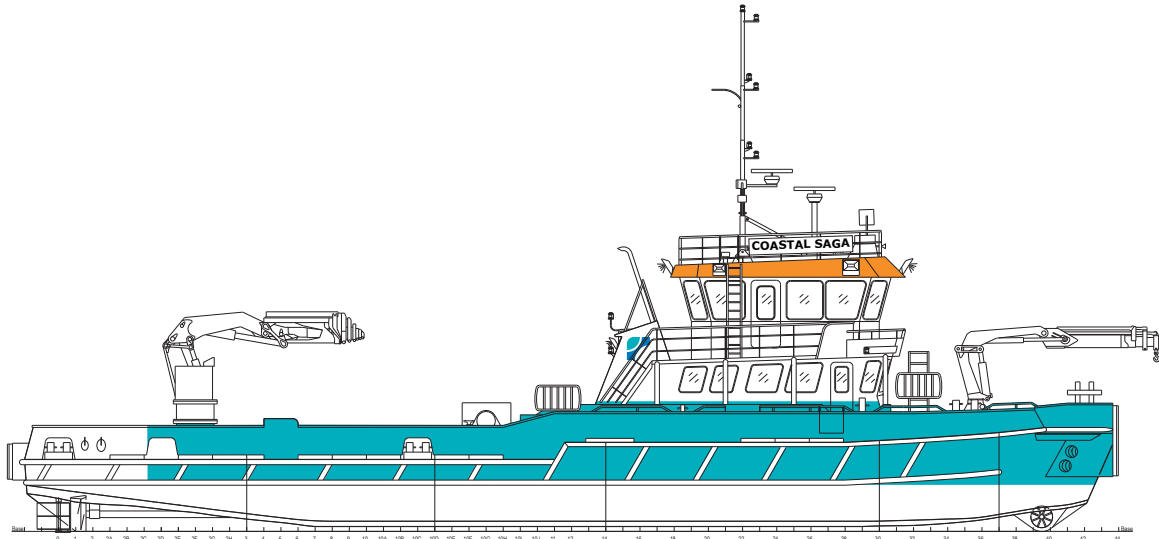
DECK EQUIPMENT

Hydraulic deck crane	83 tm, 4,3 ton at 13,40 m
Hydraulic deck crane	25 tm, 1,1 ton at 14,10 m
Towing winch	SWL: 20 tons on top layer
Tugger winch	

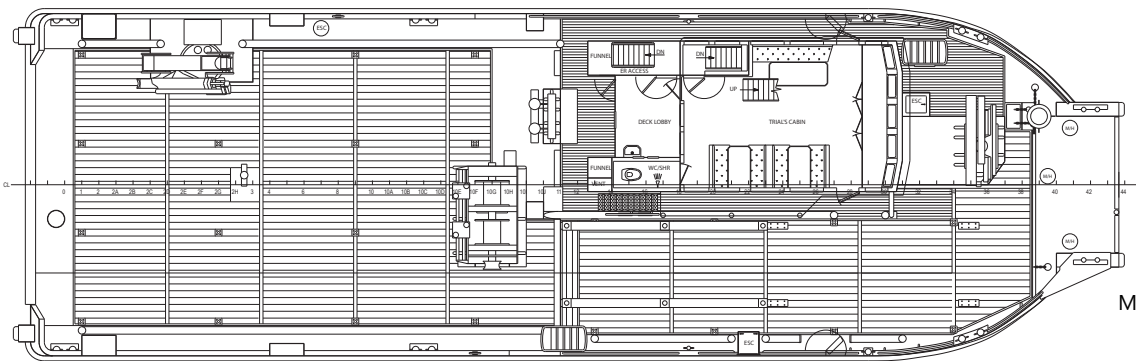
TANK CAPACITIES

Fresh water	35 m ³
Fuel	29 m ³

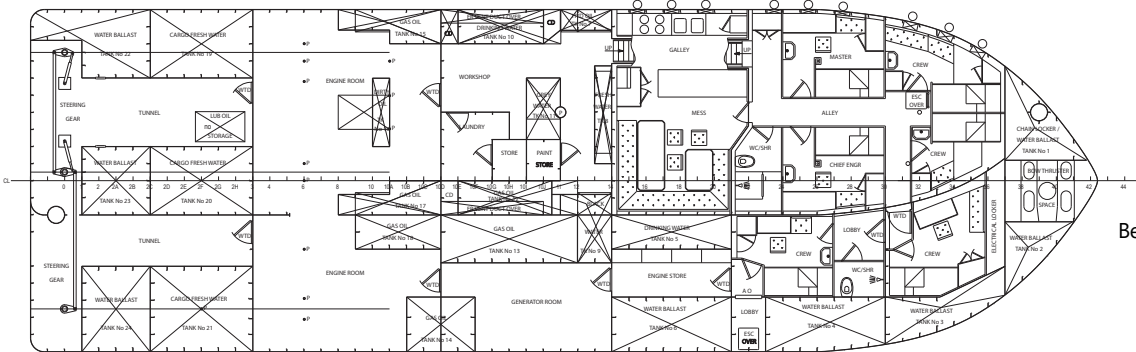
General Arrangement - Coastal Saga



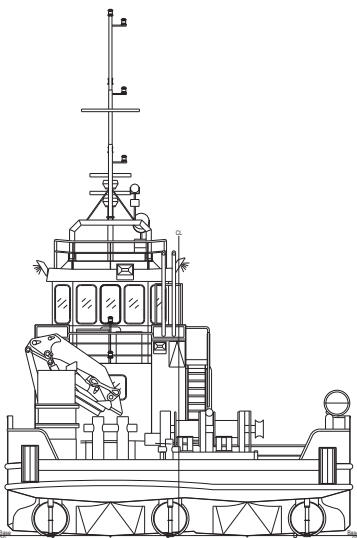
Profile



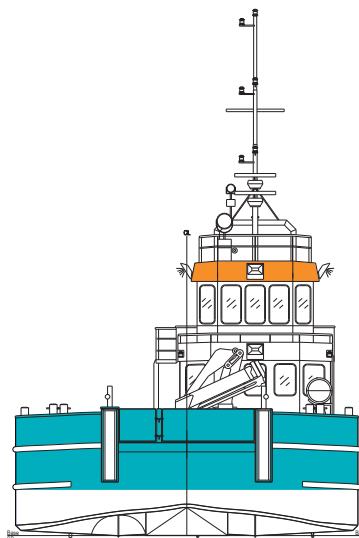
Main deck



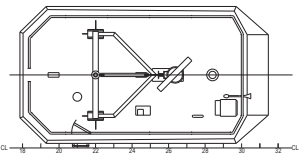
Below main deck



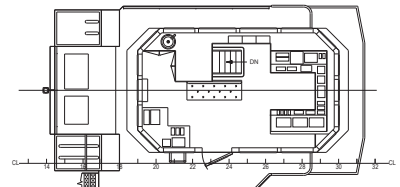
Rear view



Front view



Top deck



Wheelhouse deck